

53°09'46"N 0°27'51"W

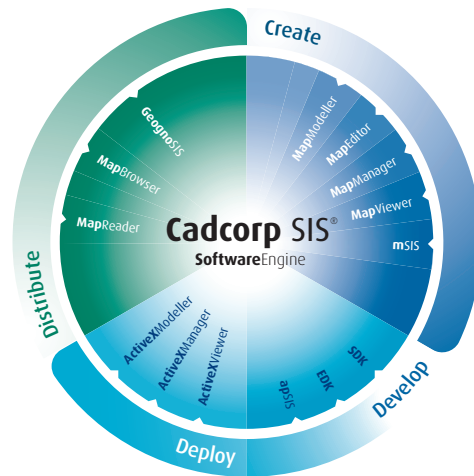
# Cadcorp SIS<sup>®</sup> Desktop Product Family

Cadcorp SIS<sup>®</sup> – Spatial Information System<sup>®</sup> is an integrated and complete family of desktop, web, developer and mobile GIS products. The Cadcorp SIS desktop product family ranges from an easy-to-use, free, data viewing tool (Map Reader) through to an advanced GIS (Map Modeller) and includes:

## Product Key Feature Table

	Over 160 supported data formats	Database Links including Oracle 10g or 11g, MS SQL Server 2008 and PostGIS	Certified Open Geospatial Consortium Inc. <sup>®</sup> (OGC <sup>®</sup> ) compliant	Thematic mapping	Print wizards	Developer version available	250 coordinate systems and transformations	Data creation and editing	GPS support	Topology creation and editing	Advanced data creation & editing	Advanced thematic mapping	Creation of 3D views & terrains	Viewshed and terrain analysis
Map Viewer	•	•	•	•	•	•								
Map Manager	•	•	•	•	•	•	•	•						
Map Editor	•	•	•	•	•	•	•	•	•	•	•	•		
Map Modeller	•	•	•	•	•	•	•	•	•	•	•	•	•	•

**Platform Support:** Microsoft Windows XP, Microsoft Windows Vista (Business and Ultimate), Microsoft Windows 2003 Server, Microsoft Windows 2008 Server



**Cadcorp SIS Map Reader** Provides users of Cadcorp SIS with a powerful free tool to easily view, query and print 'published' map data.

**Cadcorp SIS Map Viewer** A versatile tool for quickly and easily viewing, theming and printing over 160 GIS, CAD, graphic and database formats.

**Cadcorp SIS Map Manager** Provides users with the capability to view, explore, query, present and print geospatial information, and includes links to relational database management systems.

**Cadcorp SIS Map Editor** Includes more advanced GIS functionality such as advanced CAD-style geometric construction and editing, and topology management.

**Cadcorp SIS Map Modeller** Provides users with a comprehensive set of creation, editing and modelling capabilities including 3D modelling, grid analysis, terrain modelling and image draping.

## Map Viewer

**Data Access** Directly read over 160 GIS, CAD, graphic and database formats without the need for translation. Supported formats include ESRI Shape, ESRI Personal Geodatabases, MapInfo TAB and MIF/MID, OGC GML, GeoRSS, AutoCAD DXF/DWG 2004+, MicroStation DGN, OS MasterMap, MrSID, ECW, KML, Oracle 10g or 11g and PostGIS.

**OGC Support** A wide range of OGC certified compliant interfaces including Web Map Services (WMS), Web Feature Services (WFS), Web Map Context Documents, Geography Mark up Language (GML), SQL 92 databases, OGC Web Coverage Service (WCS) and Catalogue Services (CS-W) client support. A Google™ OGC Wizard enables users to access Google's search facilities to find relevant web services.

**Map Navigation** In addition to Pan and Zoom, enhanced tools include MapTips, the Roamer, Continuous Panning, Rocket and Bungee.

**Thematic Mapping** The following types of thematic maps are included:

- Bar Chart
- Pie Chart
- Dot Density
- Graduated Symbol
- Label
- Individual Value
- Ranges

**Printing** A Print Template Quick Wizard simplifies the process of producing hard copy output.

## Map Manager Adds...

**Data Editing** The creation of new 2D graphics including lines, polylines and freehand lines. Area tools include areas, multi-areas, ellipses, circles, and rectangles. Point tools include points, multi-points, and shapes. Also, familiar CAD-like precision tools such as snap and typed coordinate input, and the use of relative position.

**Querying Data** Support for spatial and database queries. Spatial queries include within a distance of, adjacent and contained within. An easy-to-use Database Query Wizard exploits native query facilities.

**Printing** A Print Template Wizard facilitates setting the scale of the map, adding a title bar, key map, legend, scale bar, north arrow and map graticules.

**Map Production** Export and print maps to PDF including the ability to add additional security settings and export layers that can be shown or hidden within Adobe Reader or Adobe Illustrator.

**GPS Support** Built-in support for GPS devices at no extra cost, including connecting to a GPS, saving and replaying logs of GPS NMEA strings, and a GPSView Workspace Window tab with a GPS 'skyplot'.

The Cadcorp SIS desktop product family runs on tablet PC's supporting field based operations with integrated or add-on GPS. The EXchangeable Image Format (EXIF) is also supported for GPS geo-referenced digital camera images.

## Map Editor Adds...

**Advanced Data Editing** Advanced tools for geometric editing including item snapping, creating offsets, line generalisation, trimming, rotating, etc.

**Topology Support** Creation of link, node, chain and polygon topology.

**Spatial Analysis** Advanced GIS data buffering including exterior, interior, outside, inside and doughnut.

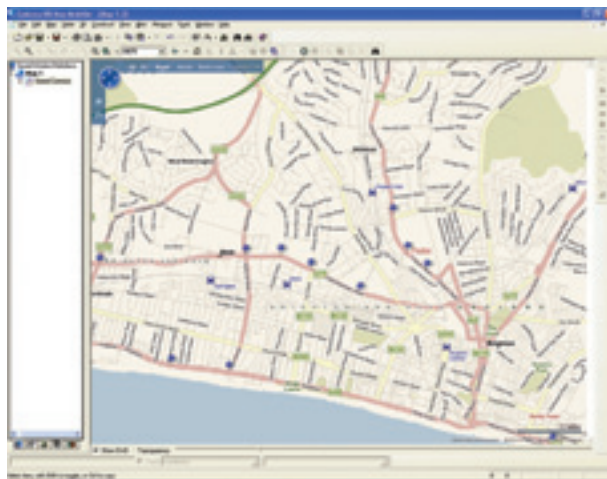


Image courtesy of Microsoft Virtual Earth

## Map Modeller Adds...

**3D Design and Analysis** Creation of triangulated irregular networks (TINs) and digital terrain models (DTMs), relief shading and surface draping of raster images and vector data for 3D visualisation purposes.

Includes support for constrained Delaunay triangulation, allowing TINs to be created from a collection of surveyed elevations, with optional breaklines and bounding areas.

**Advanced Spatial Analysis and Thematic Mapping** Including Thiessen polygon analysis, grid analysis, contour mapping and flow-line generation.

**Viewshed and Terrain Analysis** Provides line-of-sight calculations used to determine all areas on DTM data that are visible from a chosen location, plus slope, aspect, and gradient grid analysis.



**Cadcorp | Computer Aided Development Corporation Ltd**  
Sterling Court, Norton Road, Stevenage,  
Hertfordshire. SG1 2JY. UK  
T 01438 747996 | F 01438 747997

**Cadcorp Inc. | North America**  
1420 Boston-Providence Hwy, Suite #257,  
Norwood, MA 02062 USA  
T +1 (781) 551 2727 | F +1 (781) 551 3404

**Visit [www.cadcorp.com](http://www.cadcorp.com) | Email [cadcorp@cadcorp.com](mailto:cadcorp@cadcorp.com)**  
Cadcorp is a trading name of Computer Aided  
Development Corporation Ltd